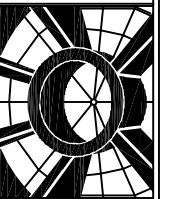


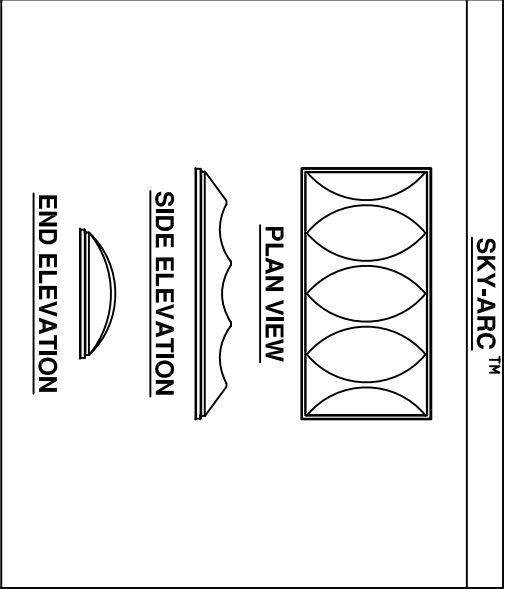
# ACRALIGHT™

INTERNATIONAL SKYLIGHTS  
800-325-4355



|  |   |
|--|---|
| <b>FRAME FINISH</b>  | <b>MANUAL RELEASE OPTION</b>  |
| <input type="radio"/> MILL (UNFINISHED)<br><input type="radio"/> OTHER _____ | <input type="radio"/> INTERIOR RELEASE<br><input type="radio"/> EXTERIOR RELEASE<br><input type="radio"/> NO MANUAL RELEASE |

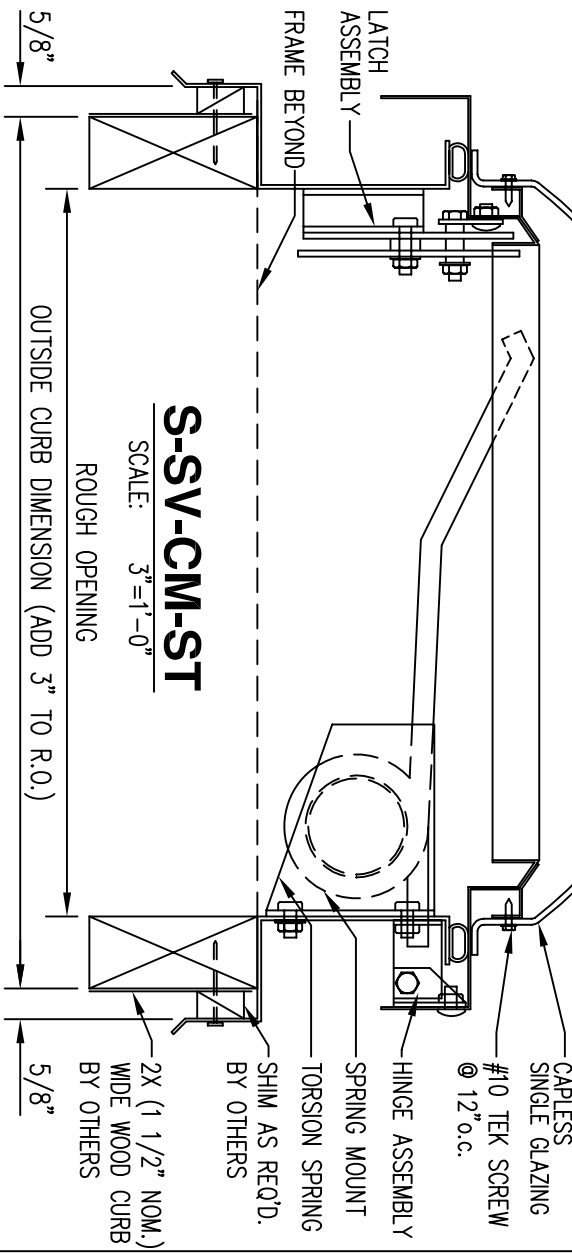
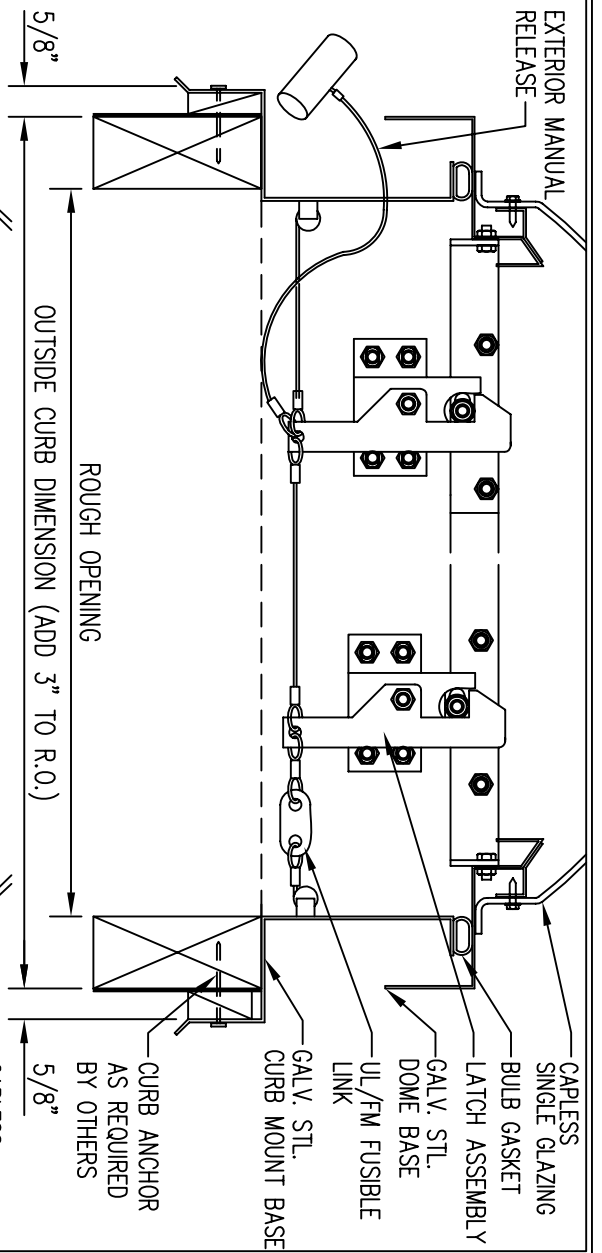
|  |
|--|
| <b>FUSIBLE LINK OPTION</b>   |
| <input type="radio"/> 165° UL/FM FUSIBLE LINK<br><input type="radio"/> 212° UL/FM FUSIBLE LINK<br><input type="radio"/> 286° UL/FM FUSIBLE LINK<br><input type="radio"/> 370° UL/FM FUSIBLE LINK |



|                          |           |                          |                   |
|--------------------------|-----------|--------------------------|-------------------|
| QTY. MODEL ROUGH OPENING |           | QTY. MODEL ROUGH OPENING |                   |
| SQUARE                   |           | RECTANGULAR              |                   |
| 4848                     | 48" X 48" | 4669                     | 46 1/4" X 69 1/2" |
| RECTANGULAR              |           | 4689                     | 46 1/4" X 89 1/2" |
| 3775                     | 37" X 75" | 4896                     | 48" X 96"         |

**SKY-ARC™ SINGLE GLAZING**

SKY-ARC™ (SA) SKY TOUGH™ (ST) WHITE



**PROJECT :**

**CUSTOMER :**

**APPROVED BY :**

**DATE :**

**JOB NO. :** DWG BY: O.S. DATE NEEDED OR SHIP BY:

**DATE SUB. :** STEEL SINGLE LID SMOKE VENT CURB MOUNTED SINGLE DOME

**REVISIONS**

|   |       |
|---|-------|
| △ | _____ |
| △ | _____ |
| △ | _____ |

**PAGE: 2.05**